

# Grow Your Household with a

# FAMILY <sup>of</sup> FAITH RETREAT

**Tailor a special event for you and the members of your immediate household to enjoy God's Backyard together!**

Jumpstart your family connections. Make time for God to grow you individually and as a family while enjoying beautiful Woman Lake. More than just time away, our goal is to help you impact your family for eternity as you all get to know our Creator God better!

Make yourself at home in a modern lakeside cabin with bathrooms or in a rustic campground cabin, your RV or tent. We have a cost-effective option to fit your family. Guests in Aspen, Cedar, Birch and campground cabins will enjoy delicious meals prepared in our dining hall. Other guests may choose to prepare their own food.

## Dates

**Session One** – July 3-6

**Session Two** – August 1-4

**Session Three** – Sept 3-6

Two night minimum stay

## Meal Plan

Meals are served in the Dining Hall for you to enjoy as a family. Supper on check-in day through breakfast on check-out day are provided. Under 4 eat free.

Participation in the food service is required for most housing options, and "a la carte" meals are available with advance notice for Balsam, RVs and Tent guests.

\$21/person/day

- Swim! Sail! Kayak or Canoe! Paddleboat!
- Pontoon Lantern Bay and go Fishing!
- Paddle a Voyager Canoe to the Donut Shop!
- Relax by a Campfire!
- Bring your bikes and take a ride!
- Or take a walk in the woods!
- Share family devotions or start a family journal!
- Join in a casual evening campfire praise gathering!

Camp staff will provide some limited activities such as archery, air rifle, games, or Creation Station presentations. Common-space areas such as the Game Room are available following Minnesota Department of Health guidance.

### Additional Info:

- You will be asked to do a simple self-check before arriving and each day at camp. See our "Healthy Camp Guidelines."
- You are attending as a *single-household* group; this does not include grandparents, unmarried adults, etc. See FAQ.
- You will be expected to follow "social distancing" guidelines.

*"So, what will my family do at Miracle Bible Camp?"* You are free to plan your family's fun on *your* schedule.

Enjoy the canoes and kayaks, paddle-boats, the fishing dock, the beach, and so on. Families participating in a **FAMILY OF FAITH** retreat can choose to join in a "light" schedule something like this:

Arrival Day		Day 2&3		Departure Day	
4:00	Arrival	8:30	Breakfast	8:30	Breakfast
6:00	Welcome & Dinner	9:15	Chapel	9:00	Chapel
8:00	Campfire (singing, S'mores, devos)	10:00	Fun with Staff	10:00	Pack and Depart
		12:00	Lunch		
		1:00	Fun with Staff		
			Beach Open (Parents Lifeguard)		
		6:00	Dinner		
		8:00	Campfire		



# LODGING OPTIONS



**Birch**



**Cedar**



**Balsam**



**Aspen**



**Red/White Pine**



**Pinecone Cabins**



BE SURE TO VISIT  
THE CREATION  
STATION TOO!

## Lodging Options

**Aspen** and **Cedar** each have two units with private bathrooms and bunk-style beds (one convertible double bed in each unit), a microwave, mini-fridge and coffee maker. Maximum 10 per unit. **Must use the camp food service.** Priority may be given to larger families for these units.

\$70/Night/Family

**Birch** has four units (2 four max, 2 six max). Each unit features private bathrooms and bunk-style beds (one double bed in each unit). **Must use the camp food service.**

\$70/Night/Family

**Balsam** has four two-bedroom units with private bathrooms. Each bedroom sleeps up to three (one bed can be a double). Kitchenette for optional meal prep. Maximum 6 per unit.

\$70/Night/Family

**Pine Point Campground:** A pavilion shower house and restroom is available for all. RV/tent site guests may choose to bring camping equipment and do their own cooking.

**RV site** with electrical hook-up \$25/night  
**RV or Tent site** without electric \$15/night

**Red Pine** and **White Pine** units house up to 6 in bunk-style beds. Mini-fridge and coffee maker in each unit. **Must use the camp food service.**

\$50/Night/Family

**Pine Cone 1-4** "Tiny-house" cabins house up to 3 (no fridge, etc.). **Must use the camp food service.**

\$25/Night/Family

**Bring bedding and towels for all housing options. Two night minimum stay.**

**Check-in:** 4:00 PM  
**Check-out:** 10:00 AM

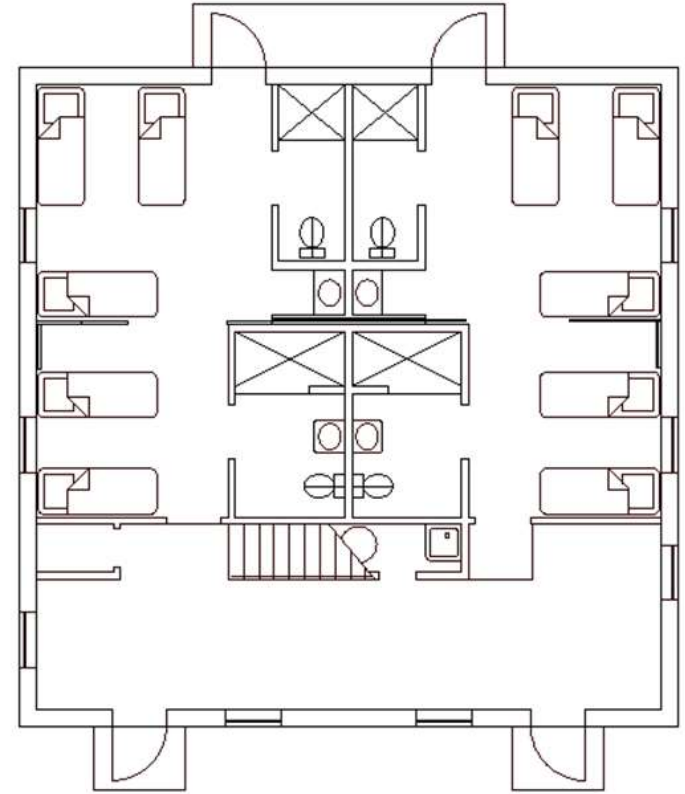
Phone (218) 682-2714





# LODGING OPTIONS

## Cedar



### Details

**Cedar** has two units with private bathrooms and bunk-style beds (one convertible double bed in each unit), a microwave, mini-fridge and coffee maker. Maximum 10 per unit. **Must use the camp food service.** Priority may be given to larger families for these units. The upper-level loft is a shared space.

\$70/Night/Family

**Please bring your own bedding and towels.**

**Check-in:** 4:00 PM

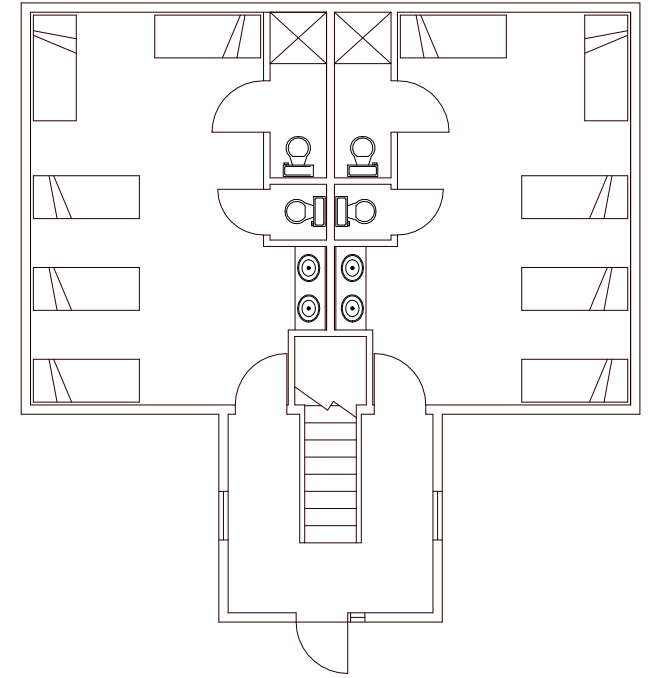
**Check-out:** 10:00 AM

**Phone (218) 682-2714**



# LODGING OPTIONS

## Aspen



### Details

**Aspen** has two units with private bathrooms and bunk-style beds (one convertible double bed in each unit), a microwave, mini-refridgerator and coffee maker. Maximum 10 per unit. **Must use the camp food service.** Priority may be given to larger families for these units. The upper-level chapel is a shared space.

\$70/Night/Family

**Please bring your own bedding and towels.**

**Check-in: 4:00 PM**

**Check-out: 10:00 AM**

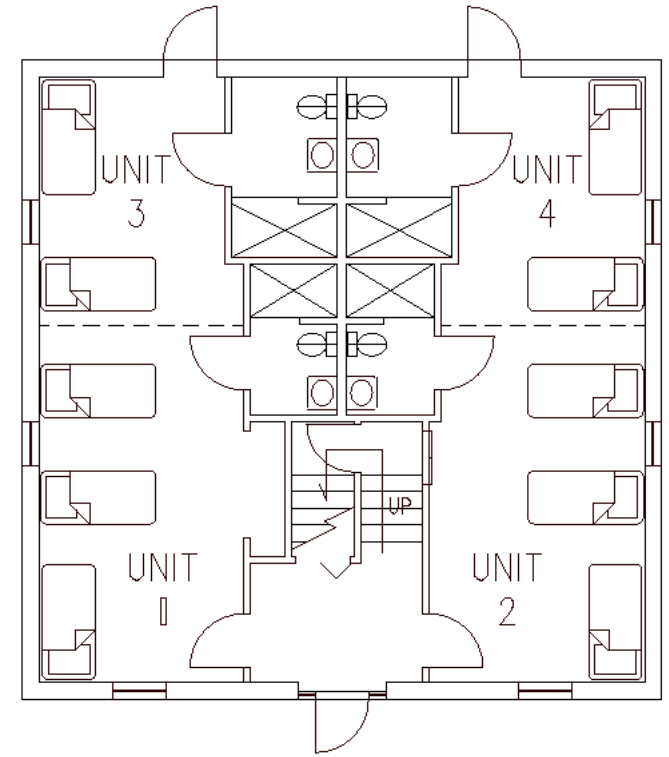
**Phone (218) 682-2714**





# LODGING OPTIONS

## Birch



### Details

**Birch** has four units (2 four max, 2 six max). Each unit features private bathrooms and bunk-style beds (one double bed in each unit). **Must use the camp food service.**

\$70/Night/Family

**Please bring your own bedding and towels.**

**Check-in: 4:00 PM**

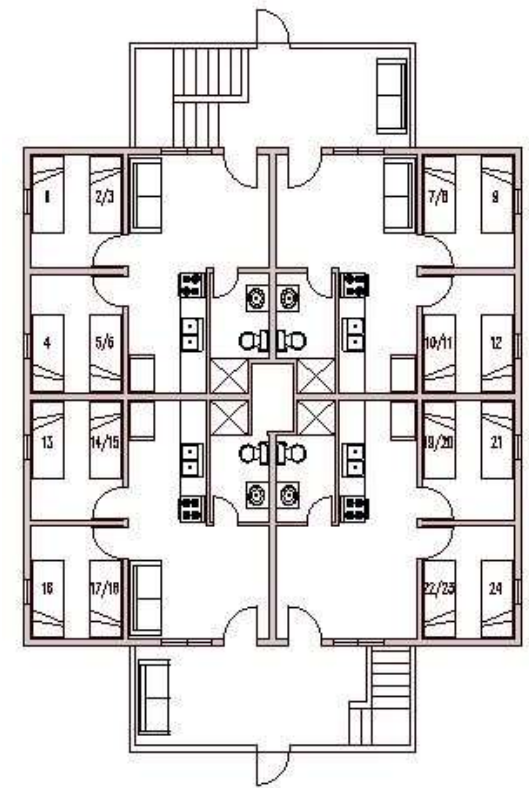
**Check-out: 10:00 AM**

**Phone (218) 682-2714**



# LODGING OPTIONS

## Balsam



### Details

**Balsam** has four two-bedroom units with private bathrooms. Each bedroom sleeps up to three (one bed can be a double). Kitchenette for optional meal prep, or you may use the camp food service. Maximum 6 per unit. The lower-level Game Room is a shared space.

\$70/Night/Family

**Please bring your own bedding and towels.**

**Check-in: 4:00 PM**

**Check-out: 10:00 AM**

**Phone (218) 682-2714**





# LODGING OPTIONS

## Pine Point Campground & Cabins

### Red Pine



### White Pine



### Pinecone Cabins 1-4



### Details

**Pine Point Campground:** A pavilion shower house and restroom is available for all. RV/tent site guests may choose to bring camping equipment and do their own cooking.

**RV site** with electrical hook-up                    \$25/night  
**RV or Tent site** without electric                    \$15/night

**Red Pine** and **White Pine** units house up to 6 in bunk-style beds. Mini-fridge and coffee maker in each unit. **Must use the camp food service.**

\$50/Night/Family

**Pine Cone 1-4** "Tiny-house" cabins house up to 3 (no fridge, etc.). **Must use the camp food service.**

\$25/Night/Family

**Please bring your own bedding and towels.**

**Check-in:** 4:00 PM  
**Check-out:** 10:00 AM

**Phone (218) 682-2714**



# LODGING MAP

